



Practice Profile

2024-2025

www.mpsl.design.co.uk

A planning & design team
you'll feel right at home with





Contents

1. Our Mission
 2. Our Team
 3. Social Value
 4. Core Services
 5. Portfolio
 6. A selection of our clients
 7. Get in touch
- 



1. Our Mission

We transform your developments with over 24 years of expertise in creating quality, marketable, and sustainable homes.

We leverage our volume house building knowledge to deliver innovative schemes, regardless of size or complexity.

Our Mission is to collaboratively design spaces that enrich lives, enhance communities and exceed expectations. We are committed to delivering exceptional planning and design services that inspire and endure, reflecting our dedication to excellence and client satisfaction



We're delighted to have been included on the ICN Framework!





2. Our Team

Established in 2000 by managing director David Golden, MPSL has built a strong, multi-disciplinary team, of planners, designers, technicians and consultants, experienced in delivering all aspects of the pre-construction process through to project delivery.

MPSL is renowned for delivering time after time thanks to a solutions-based approach which balances an understanding of the complexities of the planning process and interpretation of client requirements.

The highly skilled team combines an in-depth knowledge of construction methods and materials with architectural design, to achieve aesthetic, sustainable and commercial solutions.

With backgrounds in housebuilding, commercial development, town planning and urban design. The team has more than 20 years' relevant industry experience and includes master planners, layout designers and technicians.

Key personnel



David Golden

Managing Director

David Golden is the founding director of MPSL, having spent many years in the private housing sector. With significant design and management experience gained whilst working for the large corporates such as, AMEC and Westbury Homes, David is renowned throughout the industry for his solutions-based approach and an unerring ability to understand the planning mindset.



Darren Higson

Dep. Managing Director

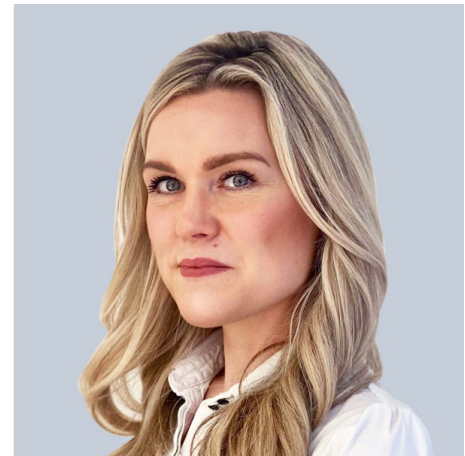
Darren has a formidable reputation for his in-depth understanding of construction methods and material compatibility to achieve both aesthetic and commercial design solutions. He has 15 years' experience with major house builders providing house type portfolios and concept housing solutions.



Adam Clews

Project Director

Adam started while the company was still in its infancy and has played an important role in its growth. Adams strength include his attention to detail and Project Management. Adam leads his team through every stage of the planning process ensuring viable and efficient schemes are secured for our clients.



Soulla Rose

Planning Manager

Soulla specialises in all planning related requirements, including layouts, house type portfolios, supporting statement writing, and the ultimate delivery of application packs. Soulla takes great pride in representing a direct point of contact for the client, whilst utilising a wealth of experience to negotiate with the Local Authority and deliver successful planning applications.

Key personnel



Phil Ardern

Technical Manager

Phil has over 20 year's experience in private practice in the Manchester area predominately within the housing sector. Phil has vast technical experience on projects ranging from refurbishment, new build houses and apartments using a wide range of construction techniques and material.



Angela Dimitriou

Company Architect

Angela joined the MPSL team in September 2018 as assistant architect after graduating from Cyprus, bringing with her a unique vision and outstanding skills. Angela is a chartered member of RIBA and registered with ARB.



Nicholas Brown

Business & Finance Controller

Nicholas brings extensive experience in administration, finance and business development to MPSL. He oversees strategic growth, ensuring strong client relationships and developing innovative marketing strategies to expand the company's reach and attract new business.

3. Social Values

Social value calls upon both the client, and the design team, to consider how a project can deliver not just a particular development itself, but also how the project might improve the economic, social, and environmental well-being of the relevant area. Social value is moving further up the agenda, with a shift in emphasis, from purely economic, to the broader socio-economic value of a project.

At MPSL, social value is held at the forefront of our business, not only to the benefit of our communities, but also in a bid to do, and see things differently, contributing to the lasting success and well-being of every demographic. As designers, our primary role is to create both successful buildings, and places, which ultimately support and compliment the communities they serve. In order to ensure the long term success of a project, social value must be embedded into the heart of the design.



Economy

We are extremely passionate about providing equal opportunities for all people, irrespective of their individual background, orientation, culture or creed. We work closely with local education and training providers, offering support and work experience opportunities, having provided a number of successful apprenticeship placements to date. We value the importance of raising the aspirations, and bridging the gap for those from disadvantaged backgrounds, supporting people to navigate a clearer pathway towards our profession, and enabling all people to succeed in reaching their full potential.



Environmental

We strongly believe that it is our obligation (and the obligation of every business) to minimising the impact of daily activities on the environment as much as possible, so as to reduce the overall carbon footprint imposed. As a company, we utilise resources efficiently, in order to reduce waste, and limit our daily environmental impact. We have recently switched to a green energy source, supplied by a UK generated 100% renewable energy provider, and actively encourage all staff members to car pool, take public transport, or cycle where possible. All of our supplies are sourced locally, with a constant focus on minimising the detrimental impact of avoidable logistics.

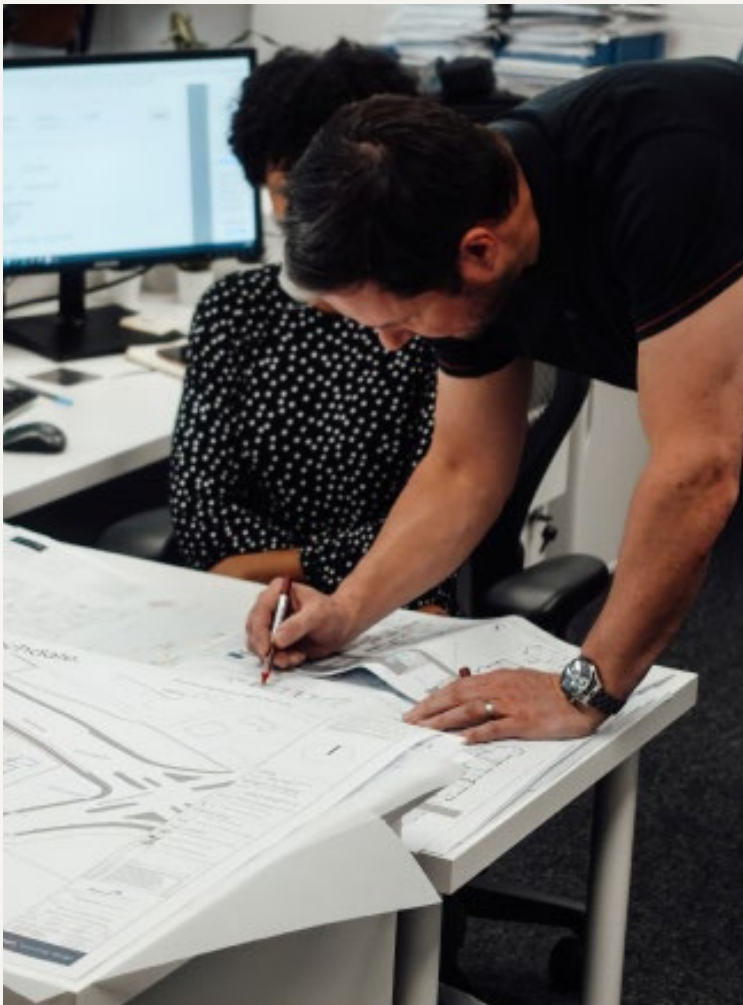
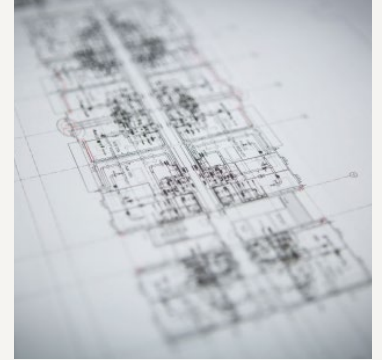
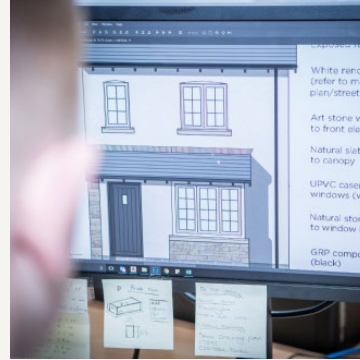
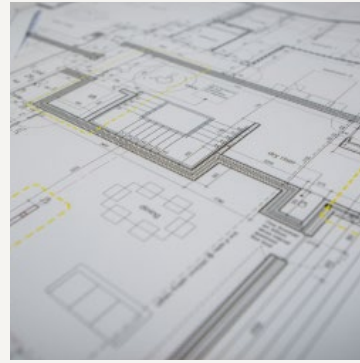
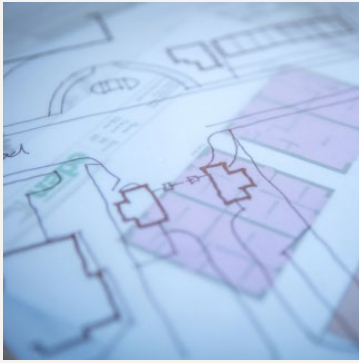


Social

The happiness and wellbeing of those impacted by the places and spaces we create, is of pivotal importance to us. This works to guide, and influence some of the key design decisions we make, ensuring that we are able to provide an ever improving environmental impact on the communities which our projects serve. We are also proud to offer sponsorship to several local organisations and sports teams, as well as donating our time, and money, towards coaching initiatives for community groups.

Proud to support





What do we offer?

MPSL provides clients with a comprehensive service for all types of development, from initial concept sketches through to detailed designs and technical working drawings. The aim is to help clients design buildings and environments that will withstand the test of time with strength, beauty and integrity.

By working closely with local authorities and developers, and liaising with residents and council members throughout the planning process, MPSL can help to create schemes which bring new benefits to the community and provide a commercially successful solution.

With a range of architecture, planning and design services available, MPSL can take on part or all of the pre-construction process on behalf of its clients, working alongside other professionals, and bring expertise to residential, commercial, and industrial projects.



4. Core Services



Sketch schemes for financial appraisals



Concept schemes



Master planning



Urban design



Planning applications



Negotiations



Landscape concepts



Public Consultations



Building design



Technical working drawings



Site supervision



Building regulation submissions



5. Portfolio

For over 20 years we have had the privilege of working on an impressive collection of projects, across diverse developments and on both a large and small scale. Renowned for delivering services of the highest level, our innovative yet practical approach achieves aesthetic, sustainable and commercial solutions every time, keeping us at the forefront of an ever-changing market.

Kersal Vale, Prestwich

Client: Cube & Great Places

Type of Development



Open sale & affordable housing

Development



11.9 Acres

Properties



109

Key Services

- Feasibility Sketch Layout
- Creation of New House Type portfolio
- Planning Application
- Technical Working Drawing Pack



Carter House Way, Widnes

Client: Magenta Living & Halton Housing

Type of Development



Open sale,
private rent &
affordable housing

Development Size



18.72
Acres

Properties



248

Key Services

- Feasibility Sketch Layout
- Creation of New House Type portfolio
- Planning Application
- Technical Working Drawing Pack



City Fields, Wakefield (Phases 1 - 4B)

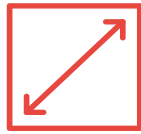
Client: Wakefield City Council, DDC

Type of Development



Open sale, private rent
affordable housing,
retirement & commercial

Development Size



24.38 Acres

Properties



646 +

Key Services

Masterplanning

Housing Portfolio

Full Planning Application



Street Scene A, A - Green Edge



Street Scene B, B - Urban Core



Heathfield Farm, Wilmslow

Client: Taylor Wimpey

Type of Development



Open sale & affordable housing

Development Size



15 Acres

Properties



161

Key Services

Feasibility Sketch Layout

Creation of New House Type portfolio

Planning Application

Technical Working Drawing Pack



High Lane, Chorlton

Client: Cube Homes

Type of Development



Open sale & affordable housing

Development Size



0.8 Acres

Properties



22

Key Services

Feasibility Sketch Layout

Creation of New House Type portfolio

Planning Application

Technical Working Drawing Pack



Rainshore Mill, Rochdale

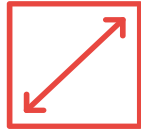
Client: Russell Homes

Type of Development



Open sale & affordable housing

Development Size



16.1 Acres

Properties



42

Key Services

Feasibility Sketch Layout

Creation of New House Type portfolio

Planning Application

Technical Working Drawing Pack



Hallgate Lane, Pilesey

Client: Forge New Homes

Type of Development



Open sale & affordable housing

Development Size



7.6 Acres

Properties



98

Key Services

Feasibility Sketch Layout

Creation of New House Type portfolio

Planning Application

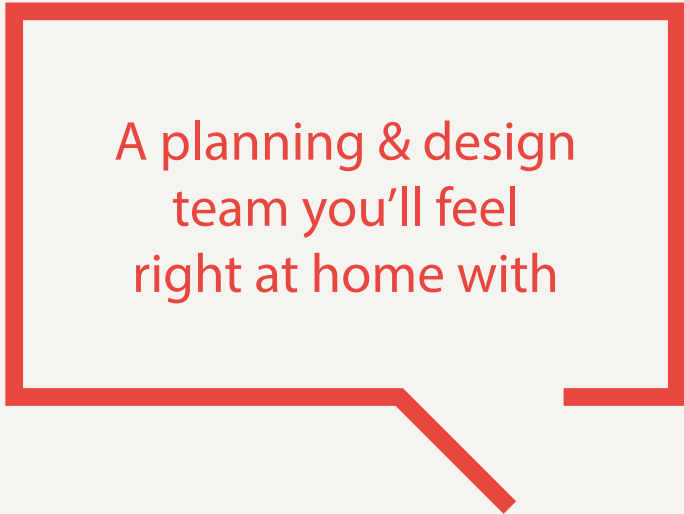
Technical Working Drawing Pack





6. A selection of our clients





A planning & design
team you'll feel
right at home with



6. Get in touch

MPSL Planning & Design Ltd
Office Gg, The ClassRooms
Stanley Square, Sale
Manchester
M33 7ZZ

T: 0161 772 1999
E: info@mpsldesign.co.uk
www.mpsldesign.co.uk

