



Practice Profile


2020-2021

www.mpsl.design.co.uk

A planning & design team
you'll feel right at home with



Contents

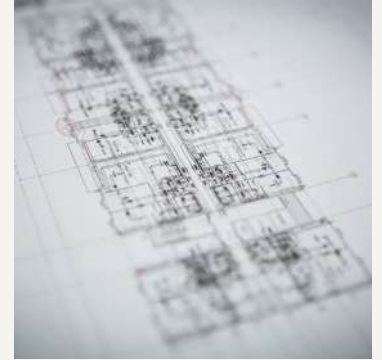
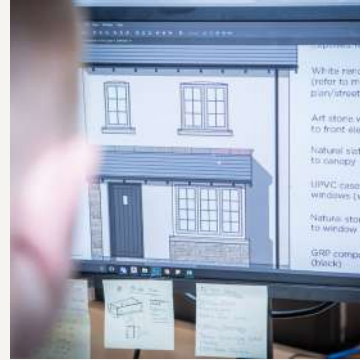
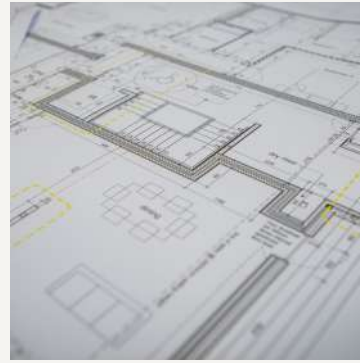
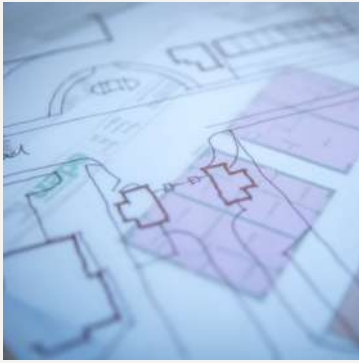
- 1. Overview**
 - 2. Core services**
 - 3. Our team**
 - 4. Portfolio**
 - 5. Clients**
 - 6. Get in touch**
- 



1. Overview

MPSL is a multi-disciplinary design and planning studio, providing the full range of pre-application and project management services for clients in residential, commercial and industrial development.

With expertise in regeneration master planning and sustainable construction, the MPSL team can act as external consultant or in-house technician for projects large or small. A dedicated team of designers, planners, technicians and consultants, MPSL has the skills, talent and experience to deliver the right impact at the best price to support its clients' schemes.



what do we offer?

MPSL provides clients with a comprehensive service for all types of development, from initial concept planning through to detailed designs and technical working drawings. The aim is to help clients design buildings and environments that will withstand the test of time with strength, beauty and integrity.

By working closely with local authorities and developers, and liaising with residents and council members throughout the planning process, MPSL can help to create schemes which bring new benefits to the community and provide a commercially successful solution.

With a range of architecture, planning and design services available, MPSL can take on part or all of the pre-construction process on behalf of its clients, working alongside other professionals, and bring expertise to residential, commercial, and industrial projects.



2. Core services



Sketch schemes for financial appraisals



Concept schemes



Master planning



Urban design



Planning applications



Negotiations



Landscape concepts



Public Consultations



Building design



Technical working drawings



Site supervision



Building regulation submissions



3. Our team

Established in 2000 by managing director David Golden, MPSL has built a strong, multi-disciplinary team, of planners, designers, technicians and consultants, experienced in delivering all aspects of the pre-construction process through to project delivery.

MPSL is renowned for delivering time after time thanks to a solutions-based approach which balances an understanding of the complexities of the planning process and interpretation of client requirements.

The highly skilled team combines an in-depth knowledge of construction methods and materials with architectural design, to achieve aesthetic, sustainable and commercial solutions.

With backgrounds in housebuilding, commercial development, town planning and urban design, public sector project management sustainable, the team has more than 20 years' relevant industry experience and includes master planners, layout designers and technicians.

key personnel



David Golden Snr
Chairman

David served on The Board of a diverse range of Companies including United Utilities, Amec, BNFL TSO, Hare Group, The Hut Group Southern Water and Payzone Currently a Governor of Knutsford Academy



David Golden
Managing Director

David Golden is the founding director of MPSL, having spent many years in the private housing sector. With significant design and management experience gained whilst working for the large corporates such as, AMEC and Westbury Homes, David is renowned throughout the industry for his solutions-based approach and an unerring ability to understand the planning mindset.



Darren Higson
Dep. Managing Director

Darren has a formidable reputation for his in-depth understanding of construction methods and material compatibility to achieve both aesthetic and commercial design solutions. He has 15 years' experience with major house builders providing house type portfolios and concept housing solutions.



4. Portfolio

For over 20 years we have had the privilege of working on an impressive collection of projects, across diverse developments and on both a large and small scale. Renowned for delivering services of the highest level, our innovative yet practical approach achieves aesthetic, sustainable and commercial solutions every time, keeping us at the forefront of an ever-changing market.

Congleton Road, Sandbach

Client: Taylor Wimpey



Development Size

19.5 Acres



Year of Approval

2014



Properties

160



Manor Boot Road, Sheffield

Client: Keepmoat



Development Size

28.8 Acres



Year of Approval

2017



Properties

256



South Rings Business Park, Bamber Bridge

Client: Roundhouse Properties



Development Size

60,000²ft



Year of Approval

2013



Type of Property

Offices



Rainshore Mill, Rochdale

Client: Russell Homes



Development Size

16.1 Acres



Year of Approval

2016



Properties

42





5. Clients

mill

er

homes

 **Russell**
Homes

 **Keepmoat**

 **REDROW**
HOMES


ALLIANCE


ERIC WRIGHT
GROUP


MULBURY

Taylor
Wimpey

 **LANCET**
HOMES

 **KIER**

 **Sheffield**
HOUSING COMPANY

ENGIE

 **GallifordTry**

Holker Group

Harworth

 Sigma Capital Group plc

prospect.
HOMES


ALBEMARLE
HOMES

CBRE

SPORTS
DIRECT
PROPERTY

placefirst

 **great**
places
HOUSING GROUP

 **GLADMAN**


Homes
England



**A planning & design
team you'll feel
right at home with**



6. Get in touch

MPSL Planning & Design Ltd
Commercial House
Unit 14, West Point Enterprise Park
Trafford Park
Manchester, M17 1QS

T: 0161 772 1999
E: info@mpsldesign.co.uk
www.mpsldesign.co.uk

